



# Food & Dairy



Our exceptional craftsmanship and demonstrated performance are evident from silo type tanks to the DCI, Inc. Dynamixer Processor.

## Products

- Stainless Steel Processors (variety of agitator, propellers, and bottom shape designs available)
- Fermentation Tanks and Vessels
- Silos
- Horizontal and Vertical Storage Tanks and Vessels with Vertical or Horizontal Agitation
- Mixing Tanks and Vessels
- Whey Crystallizers
- Insulated or Single Shell Storage Tanks and Vessels
- Processors
- Agitation (Pharmix)
- VARO Horizontal Processing Tanks (HPT)
- DCI, Inc. Dynamixer and Dynamixer Processors

Not only does DCI Inc. manufacture the above equipment for the food and dairy industries *but we build custom engineered equipment* that fits your company needs. Send DCI, Inc. your existing prints and specifications to get started. If you don't have existing prints please reach out with the information you do have and allow DCI Inc. to help engineer your new equipment.

## Capabilities & Customization

DCI, Inc. will customize any piece of equipment to your exact specifications. Get the most out of your equipment with our value added solutions and services:

- Material/Weld Finishes
- PharmAssist Lift Assist Solutions
- Heat-transfer Surfaces
- Passivation
- Riboflavin Testing
- Clean-in-Place Agitator
- Positive Material Identification
- Electropolishing
- Variety of Heat-transfer Applications (channel, dimple, half-pipe, etc,)
- Catwalks, Ladders, and Platforms
- Control Packages

## Additional Services

- Field Fabrication At Your Site
- Field Service - Repairs and Modification



# Beverage



At DCI, Inc., we design and create custom storage vessels for any size operation. Our average equipment can be customized for any specifics and featuring sanitary finishes, CIP cleanability, ASME and API designs. No matter your needs, we work with your contractor to understand your plans and ideas to recommend equipment that best serves your process and space.

## Products

- Mixing Tanks and Vessels
- Storage Tanks and Vessels
- Fermentation Tanks and Vessels
- Bright Beer Tanks and Vessels
- Hot Liquor Tanks and Vessels
- Insulated or Single Shell Storage Tanks and Vessels
- Mash and Lauter Tuns
- Brew Kettles
- Surge Tanks and Vessels
- Agitation (Pharmix)

Not only does DCI Inc. manufacture the above equipment for the beverage industry *but we build custom engineered equipment* that fits your company needs. Send DCI, Inc. your existing prints and specifications to get started. If you don't have existing prints please reach out with the information you do have and allow DCI Inc. to help engineer your new equipment.

## Capabilities & Customization

DCI, Inc. will customize any piece of equipment to your exact specifications. Get the most out of your equipment with our value added solutions and services:

- Material/Weld Finishes
- PharmAssist Lift Assist Solutions
- Heat-transfer Surfaces
- Passivation
- Riboflavin Testing
- Clean-in-Place Agitator
- Positive Material Identification
- Electropolishing
- Variety of Heat-transfer Applications (channel, dimple, half-pipe, etc.)
- Catwalks, Ladders, & Platforms
- Control Packages

## Additional Services

- Field Fabrication At Your Site
- Field Service - Repairs and Modification



# Wine



From design to fabrication, Sanitary Stainless Welding Inc. (SSWI), a DCI, Inc. Company, is a premium supplier of stainless-steel storage, fermenting and processing tanks, piping, grape receiving hoppers, screw conveyors, and catwalks for the wine industry specializing in Tank Farm Project Management.

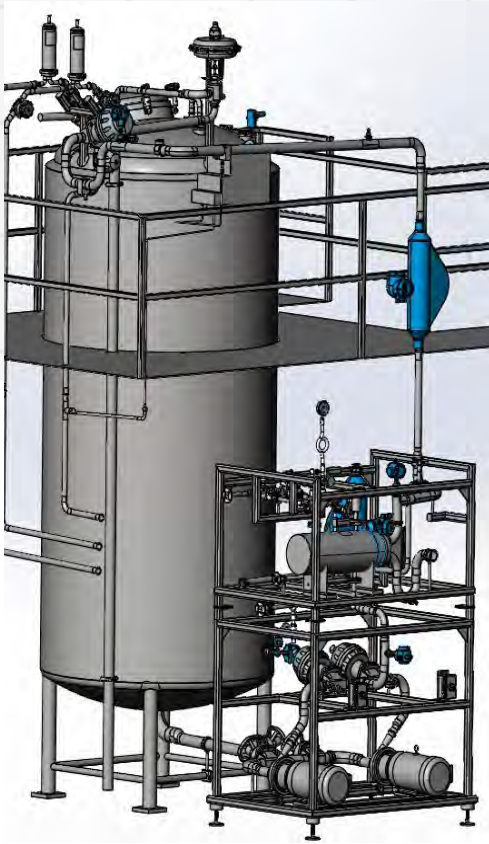
## Products

- Specializing in Tank Farm Project Management
- Tanks custom designed, fabricated, and installed tanks up to 700,000 gallons capacity
- Catwalks custom designed, fabricated, and installed to customer specifications
- Receiving hoppers, belt and screw conveyors built and installed
- Complete Marzola product line of screw presses, bladder presses, destemmers and dejuicers

Not only does SSWI, a DCI Inc. company, manufacture the above equipment for the wine industry *but we build custom engineered equipment* that fits your company needs. Send SSWI your existing prints and specifications to get started. If you don't have existing prints please reach out with the information you do have and allow SSWI to help engineer your new equipment.



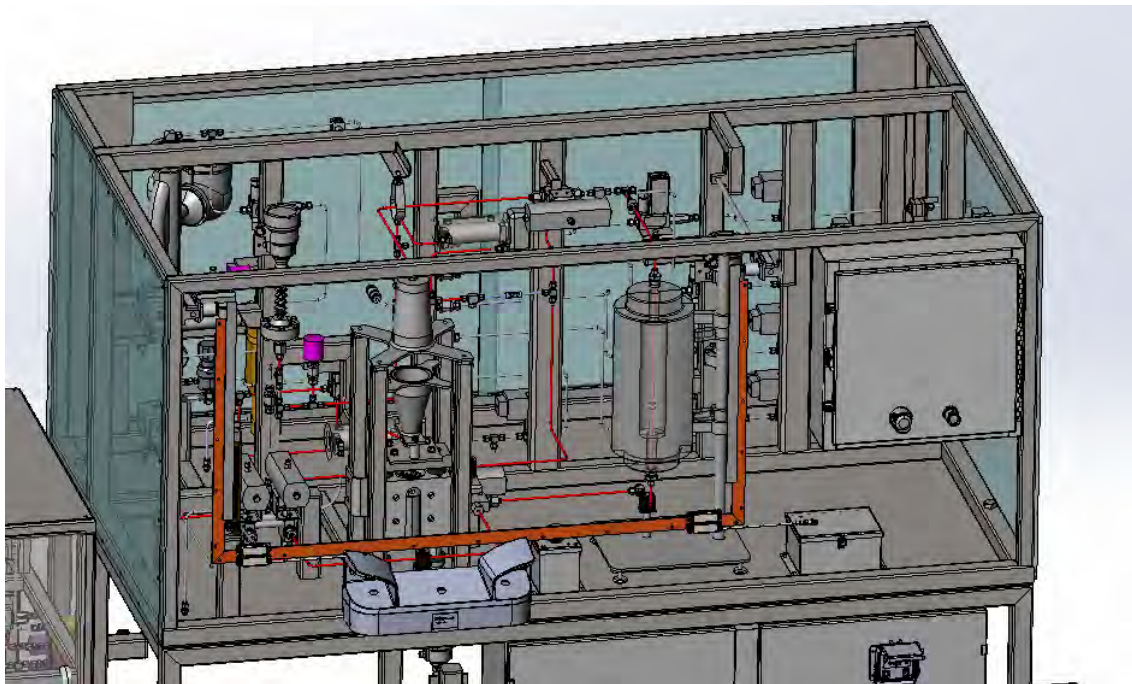
# 3D – Modeling and Design



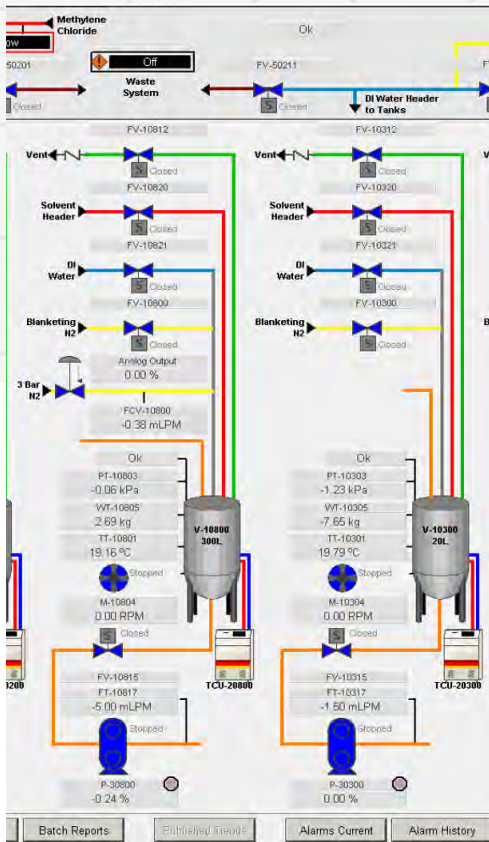
CPS's 3D modeling team utilizes pack and go technology to import and export models and assemblies to and from any modeling software package. The execution of this functionality makes the engineering design and fabrication process a seamless experience.

CPS's team of mechanical and process engineers utilize software packages from SolidWorks® and AutoCAD.

As part of our design process, CPS utilizes flow simulation software. These software packages provide our engineers expert control and analysis of flow, thermal, and CFD analysis from within the development phase of the project.



# Automation, SCADA, DCS, and Control Panels



CPS has been an industry leader of automation solutions for over 40 years. Our expertise spans from legacy systems of the past to the modern SCADA and DCS control systems of today. Our automation team continues to develop cutting edge automated solutions that utilize the latest technology the industry has to offer.

CPS's experience of legacy systems also aids in the modernization process of aging technology. Upgrade procedures have been standardized at CPS that align with the migration paths developed with our technology partners. By utilizing these standards, the development and implementation of these modern replacement solutions are efficient and cost-effective.

From PLC machine control to DCS and SCADA, CPS's solutions cater to all applications.

Our team also understands the importance of data collection and reporting. This is especially important when dealing in GMP and regulated spaces. Not only is collecting the data important, but interpreting the data is even more crucial to the success of the application. CPS's team has developed solutions that make the data readily available through PC and HMI based solutions, as well as plant wide access to the reporting tools and modules available to track, chart, calculate, and report the data pertaining to the application.

In addition to the software solutions, CPS has an in-house UL, ATEX, and CSA rated panel shop.

*This in house approach allows for CPS to provide a single source approach to all our automation solutions.*



# Process Skid Design, Build, Fabrication

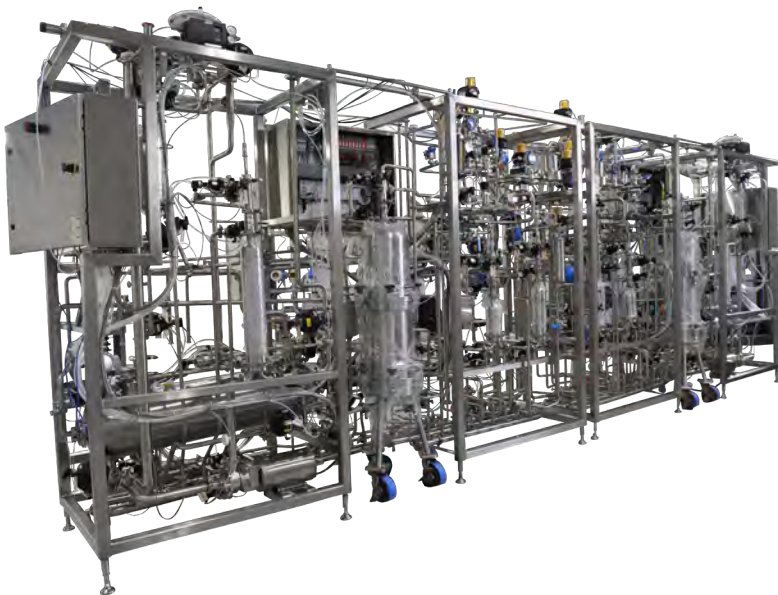


CPS specializes in pharmaceutical process equipment and skids. From process vessels and piping to agitation and controls, we've got you covered. We engineer solutions that meet your industry's demanding and critical process requirements.

Whether the systems are designed in house or externally, our design team are experts in executing the design of Systems from lab based and benchtop systems to full scale super skids.

Our in-house certified welding inspector has developed training procedures to ensure that our fabrication team is trained and certified in the proper welding techniques utilized in the fabrication of stainless steel and hygienic systems.

In addition to these procedures, our staff is trained in the validation process identified within the ASME BPE standard. With in-house Positive Material Identification (PMI) and Borescope testing, CPS ensures that the quality of the materials and welds meet the requirements of the BPE standard.



# Dynamixer & Dynamixer Processor

Our processing tanks are designed and engineered with years of industry expertise. Whatever you need to do, we make sure that the quality of our products ensures the integrity of yours. The Dynamixer and Dynamixer Processor help you efficiently and economically process your product in a number of ways including:

- Mix
- Disperse
- Dissolve
- Rehydrate
- Chip
- Reconstitute
- Sparge
- Blend
- Heat
- Cool
- Prebreak
- Store
- Chop

## Dynamixer

The Dynamixer is designed to mix dry solids, semi-solids or liquids into a slurry or liquid product. This high speed mixer/blender may also be used to blend, disperse, reconstitute, dissolve, rehydrate, prebreak or rerun soluble solids, soluble pastes and liquids quickly, efficiently and completely. Insoluble products are dispersed into liquids to make suspensions and slurries with greater stability and homogeneity.

- Single cup impeller with chopper blade for any type of mixing and chopping
- Available in round or square designs
- Scraper surface agitator for consistent mixing every time
- Right angle drive mounting for great economy and efficiency

## Dynamixer Processor

The Dynamixer Processor combines all the features of the Dynamixer high speed mixer with the benefits of a cone-bottom processing tank. It can perform three separate process functions all in the same tank. Mixing dry or semi-solids into a liquid, chopping or chipping solids, and heating and/or cooling the mixed batch. Ingredients are mixed or chopped with a base product through a liquid vortex created by the high speed impeller or chopping blade located in the bottom cone of the tank.

- Top-entry side and bottom scraper blade agitator scrapes sidewall and cone heat transfer surface for consistent mixing
- Heat exchange surface and insulation are available for cooking and cooling products
- Adjustable and removable baffle controls product rotation for better mixing and heat exchange
- Vacuum and pressure capability for easy loading and unloading

## The Right Angle Drive Advantage

Our unique right angle drive mounting insures product consistency from batch to batch and allows you to use standard from motors, which are more economical than vertical shaft “pancake” type motors. Right angle drives also operate more quietly and with less vibration to reduce drive component wear and alignment problems. Because the drive is away from the bottom of the tank, cleaning and inspecting are easy. Save money and increase efficiency with right angle drive mounting on your Dynamixer and Dynamixer Processor.



# PharMix Agitators

Designed for demanding mixing applications, the PharMix top entering agitators lead the industry in performance and cleanability. These stainless steel drives are available in direct, parallel, and right angles with multiple impeller and mounting options. With patented in-vessel hygienic coupling and BPE compliant hygienic shaft seals (atmospheric or pressure), PharMix agitators meet any mixing need.

## 1000 Series

The 1000 series agitators are ideal for open top and non-pressurized applications such as ingredient preparation, pre-mixing, and compounding in vessels from 50-650L.

- Adjustable multi-axis mount settings and clamp-on design accommodates any setup
- Industrial-strength prop shaft with keyless shrink disc torque transmission for advanced performance



## 3000 Series

The 3000 series agitators are perfect for process mixing, media/buffer preparation, and other continuous agitation needs in vessels up to 750L. It also comes with single mechanical seals with or without a sanitary gland.

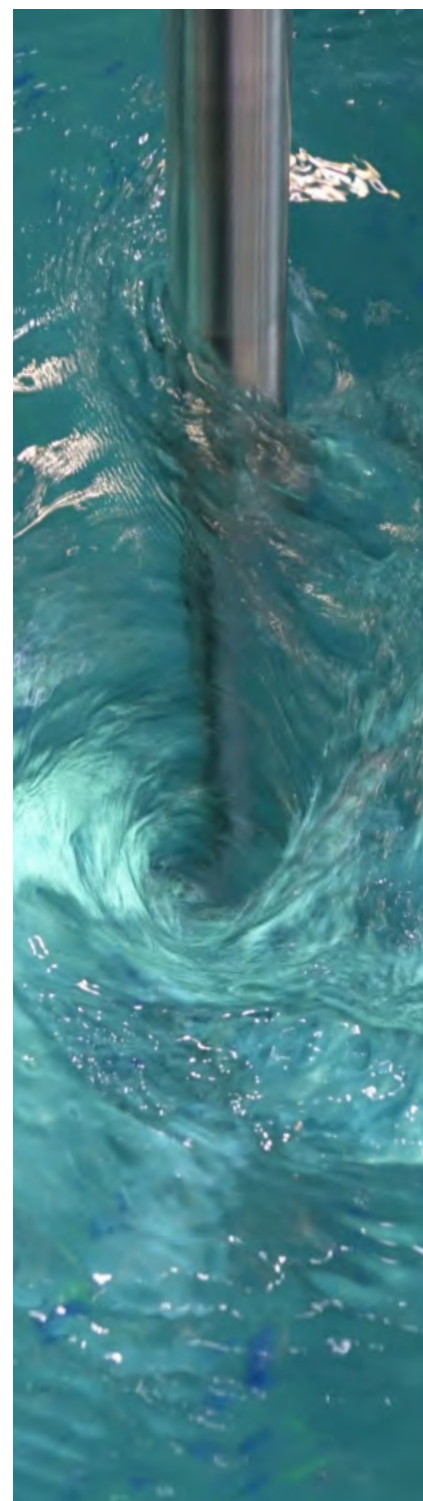
- Powerful SMI inverter-duty drive motor with parallel-helical gearing for quiet and smooth operation and reduced wear



## 4000 Series

The 4000 series agitators are excellent for any mixing applications for high volumes (up to 2,500L). The polished right angle drive comes in a compact low-profile design with space saving tri-clamp mounts. This is the agitator of choice for mixing.

- Robust prop shaft with keyless shrink disc torque transmission for advanced performance
- Multiple impeller options and shaft seal selections available, including single mechanical seals (with or without sanitary gland) and double mechanical seals.



# Superior Sanitary Mixing

## D-Series/MD-Series

The D-Series agitator is ideal for small-scale mixing requirements for research and development and pilot plant needs. The powerful torque and high RPM capacity makes the D-Series ready for a wide range of applications for all types of products in vessels up to 200L.

- Direct drive and direct in line planetary gear reduction available.
- Durable prop shaft is designed for extreme low level mixing and speeds to 850 RPM.
- Multiple impeller options and shaft seal selections available, including single mechanical seals (with or without sanitary gland) and double mechanical seals.



## PharMix MSP (Mechanical Seal Port)

Eliminate welded sanitary fittings with the PharMix MSP. The flush interior creates a smooth profile for easy self-draining and a true hygienic connection with removable nozzle on any agitator mechanical seal.

- Snap-on self-centering gasket design makes installation and maintenance easy.
- Available in standard 1/2" hygienic (tri-clamp) fitting connection (other fitting styles available).
- Low-friction Tuf-Steel® gasket won't bind, ripple, or compress when tightened.

## PharMix Seal Hygienic Coupling

Our patented hygienic coupling (US Patent 10,641,394 B2) is ideal for multi-product mixing where impellers are changed to match processing requirements or when one-piece continuous shafts cannot be installed. The unique design can be used above or below product surface and accommodates frequent equipment inspections and superior cleanability.



# Site Fabrication & Field Service

Our field fabrication and service group is a dedicated team of experienced field specialists in stainless steel and other alloy materials. We're strategically located in the central and western United States to provide prompt and responsive service anywhere across the country. From on-site fabrications to routine maintenance and service, we bring our skilled craftsmanship and the latest technology right to your site.

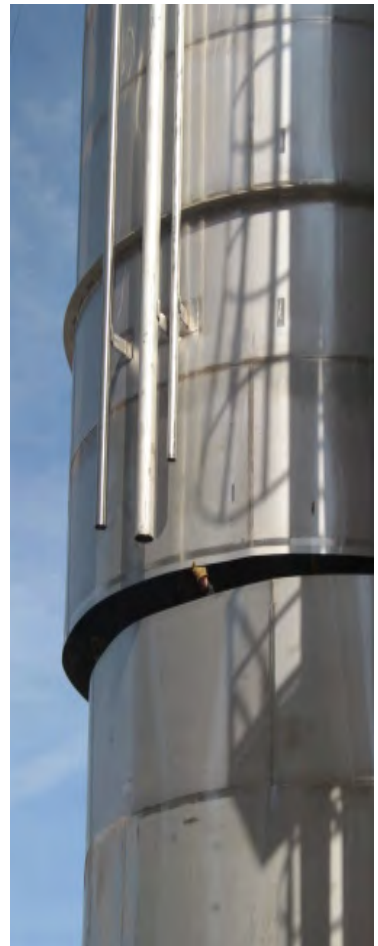


## Site Fabrication

Using our unique construction methods and heavy-duty construction equipment, our team of experienced field specialists can fabricate any size tank up to 1,000,000 gallons. We're able to build new tanks inside or outside your existing facility, at a new site, or any location with restricted access. Whether you need new construction, plant expansion, or tank demolition, our team coordinates the entire project with you and your other contractors at your site's existing plant operations so that other construction projects can continue without any delay or interruption.

## Field Service

Our field technicians have years of hands-on experience working in facilities just like yours. From making emergency repairs to providing routine and preventative maintenance, we're ready whenever you need prompt and responsive service. From a clean room to standard production area we can perform the work without interruption to your production process.



## Repairs

If your equipment breaks down, our on-site technicians are ready to make repairs that keep it operational:

- Agitator
- Weld cracks or failures
- Heat transfer surfaces
- Valve replacements
- Vacuum
- Fittings
- Corrosion/pitting/stain removal
- Spot electropolishing
- Demolition
- Silo tops

## Modifications/Additions

We're able to modify or change your equipment to accommodate your evolving needs:

- Fittings and valves
- Heat transfer surfaces
- Mechanical polishing
- Increase in tank capacity
- All agitation types & models
- Surface finish
- Manway lift assists
- Tank rigging
- Flashing and alcove

## Testing

Our experienced field service group uses the latest technology and methods to ensure your equipment is functioning at its very best:

- Non-Destructive Testing
- Ultrasonic Thickness
- Liquid Dye Penetrant
- Boroscope
- Positive Material Identification
- Surface Finish
- Radiograph (X-ray)
- CIP/Riboflavin

## Inspections

Our certified inspectors can help you maintain your equipment with rigorous inspections of the following equipment:

- Tanks
- Agitators
- Gaskets
- Manways
- Dip tube
- Inlet/outlet
- Sight Glasses
- Fittings
- Piping



## Maintenance Programs

Prevent equipment malfunctions and interruptions in production with our routine maintenance programs. Our team of service engineers and technicians will visit your site to ensure your equipment is in peak operating condition. If they discover any issues, they'll notify you immediately and recommend solutions.

# Capabilities & Customization

Personalize your equipment to support your process with our value added accessories and services. We consider every aspect of your processing needs as we manufacture your equipment to deliver a solution that's ready for your production.



## Material/Weld Finishes

We offer several material and weld finishes that satisfy your application requirements for sanitation, cleanability, or cosmetic appearance. Our finishes include:

- As-welded with no grinding or cleaning
- Gently cleaned to remove larger irregularities
- Glass bead blasted for a satin appearance
- Grit finish ranging from 155RA to 10RA
- Electropolished finish ranging from 25RA to 10RA

## Lift Assist Solutions

Our piston style assist solutions are dramatically superior to torsion spring style lifts. Conversion kits are available and we can field modify existing tanks from spring to piston without requiring an ASME hydro or R stamp.

- **PharmAssist Lift Assists®** are ideal for safe manway lifting. The compact sealed piston design features a stainless steel construction and FDA approved bushing and gaskets. Available in horizontal or vertical mounts for any size manway.
- **Standard Horizontal Mount Lift Assists** are made for vessels with a flanged top head. The compact design eliminates interference and safety concerns.
- **Vertical mount Open/Close assists** are made for vessels with a flanged top head. The compact design eliminates interference and safety concerns.



## Positive Material Identification (PMI)

We use the latest technology to validate raw materials to assure material traceability of components. Our PMI procedure is non-destructive includes calibrations to Certified Materials References to verify that the material and documentation is correct before and after production.



### **Heat Transfer Surfaces**

Half-pipe and plug-welded (ammonia-freon or water-glycol) dimpled jacket heat transfer surfaces provide efficient and uniform heating or cooling through single or multi-zone controlled flows. All of our heat transfer surfaces are manufactured, tested, inspected, and code stamped to ASME standards.

### **Clean-in-Place Agitator**

Our patented clean-in-place (CIP) agitator eliminates manual cleaning of seal shaft and seating surfaces and the need for daily take-apart after each tank or vessel cleaning. Cleaning solution is filtered and directed through the seal and across agitator blades for ease of cleaning. Reduce tank entry and maintenance costs and improve quality control. The CIP agitator is a more efficient use of equipment, promotes longer sanitary seal life, and reduces the chance of scratching interior surfaces and abrasive scoring of agitator's seating surfaces.

### **Electropolishing**

Electropolishing removes metallic and non-metallic inclusions to improve surface cleanability and life expectancy of a vessel. By reducing the exposed product contact surface area, the vessel is more resistant to corrosion and creates a passive contact surface. We're able to electropolish vessels up to 13' in diameter and 25,000 in capacity.

### **Upward Spray Cleaning System (silos only)**

Our upward spray cleaning system performs all clean-in-place (CIP) operations without requiring access to the top of the tank. Save money by eliminating the need for ladders, walkways, and cages. Every upward spray system includes internal primary and secondary lines, saving expenses used for insulation and heat tape. The system is USDA accepted for use in 3-A silo tanks and can fit tanks up to 60,000 gallons.

---

# Custom Quality

*In Every Detail*

DCI, Inc.  
600 North 54th Ave  
St. Cloud, MN 56303  
Phone: 320-252-8200  
[www.dciinc.com](http://www.dciinc.com)



Control & Power Systems  
17 Spielman Rd  
Fairfield, NJ 07004  
Phone: 973-575-3300  
[www.c-p-s.com](http://www.c-p-s.com)

