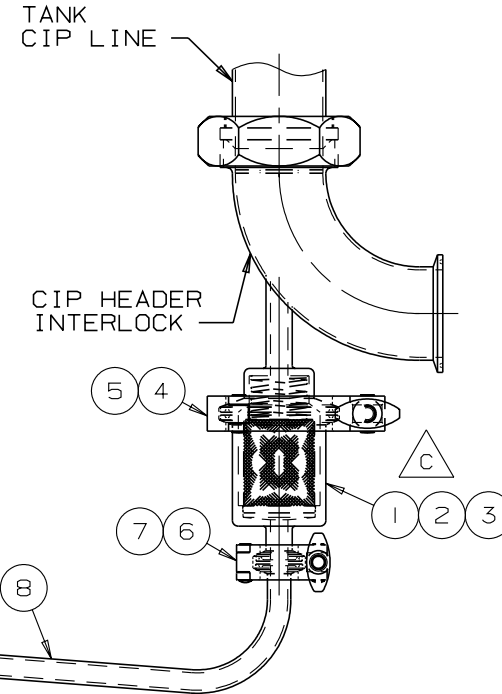


NOTES:

1. CONNECT AGITATOR CIP LINE TO TRI-CLAMP FERRULE IN BOTTOM OF AGITATOR MOUNT BEFORE STARTING CIP OPERATION.
2. AFTER COMPLETION OF CIP CLEANING, DISCONNECT AGITATOR CIP LINE TO DRAIN REMAINING CIP SOLUTION FROM AGITATOR.



This drawing is the property of DCI, Inc. and is transmitted in confidence. The reproduction, use, or disclosure, in whole or part, of the design contained herein is prohibited without the written consent of DCI, Inc.

ITEM NO.	PART NO.	QTY.	DESCRIPTION	MATL. SPEC.	REV	DATE	SCALE:	DO NOT SCALE DRAWING	PROD MH	APPVL	CHK
8	959-903745	1	TUBE ASSY #GFDA-0500 X 66" LG 1/2" TC ENDS								
7	917-930430	2	CLAMP HVY DUTY 3/4" & 1/2" 13MHHS	304							
6	919-931132	2	GASKET 1/2" FERRULE #42MP-U	BUNA-N							
5	917-930426	1	CLAMP HVY DUTY 2" 13MHHS	304							
4	919-931111	1	GASKET 2" FERRULR #40MPF-X	WHITE SILICONE	A	10-23-92		DIMENSIONS IN INCHES UNLESS SPECIFIED			
3	977-907385	1	SPRING CIP FILTER C1225-096-10005	304	B	10-17-94		TOLERANCES UNLESS SPECIFIED			
2	977-907488	1	STRAINER SCREEN CIP AGIT RON-VIK 100 MICRON	316	C	7-9-96		FRACTION: ± 1/32 DECIMAL: ± .005 ANGULAR: ± 1/2°			
1	036-168507	1	FILTER HOUSING,BODY,CIP AGIT,2 TC,.5 TC INLET	SA479-304	D						
					E						

CIP LINE, AGITATOR, STANDARD SILO



ORDER NO.	NO. REOD	REV	DATE	DO NOT SCALE DRAWING	PROD MH	APPVL	CHK
		A	10-23-92	DIMENSIONS IN INCHES UNLESS SPECIFIED	12-6-88		
		B	10-17-94	TOLERANCES UNLESS SPECIFIED	DATE	DATE	DATE
		C	7-9-96	FRACTION: ± 1/32 DECIMAL: ± .005 ANGULAR: ± 1/2°	PREFIX	DWG NO.	REV
		D			100-01	B120002	C
		E					