

| MATERIAL GAUGE (GA) | INSIDE DIAMETER (ID) | DISH RADIUS (DR) | KNUCKLE RADIUS (KR) | STRAIGHT FLANGE (SF) | | INSIDE HEIGHT (H) W/.25 SF | CAPACITY GALLONS W/.25 SF | STAINLESS DRAWING NO. (REFERENCE) | MILD STEEL DRAWING NO. (REFERENCE) |
|---------------------|----------------------|------------------|---------------------|----------------------|------|----------------------------|---------------------------|-----------------------------------|------------------------------------|
| | | | | STD. | MAX. | | | | |
| 10 TO 14 | 12 | 12 | 1 | 0.25 | 0.50 | 2.452 | 0.8 | 147262 | 200300 |
| 7 TO 14 | 16 | 16 | 1.5 | 0.25 | 0.50 | 3.289 | 1.9 | 147263 | 200301 |
| 7 TO 14 | 18 | 18 | 1.5 | 0.25 | 0.50 | 3.553 | 2.6 | 147264 | 200302 |
| 7 TO 14 | 18.62 | 18.62 | 1.25 | 0.25 | 0.50 | 3.484 | 2.6 | 147265 | (AVAILABLE) |
| 7 TO 14 | 19.75 | 19.75 | 1.25 | 0.25 | 0.50 | 3.634 | 3.1 | 147266 | (AVAILABLE) |
| 7 TO 14 | 20 | 20 | 1.5 | 0.25 | 0.50 | 3.818 | 3.4 | 147267 | 200303 |
| 7 TO 14 | 23.75 | 23.75 | 1.5 | 0.25 | 0.50 | 4.317 | 5.3 | 147268 | (AVAILABLE) |
| 7 TO 14 | 24 | 24 | 1.5 | 0.25 | 0.50 | 4.350 | 5.4 | 147269 | 200304 |
| 7 TO 14 | 29.75 | 29.75 | 1.87 | 0.25 | 0.50 | 5.342 | 10.1 | 147270 | 200305 |
| 7 TO 14 | 35.75 | 35.75 | 2 | 0.25 | 0.50 | 6.217 | 16.7 | 147271 | 200306 |
| 7 TO 14 | 41.75 | 41.75 | 2 | 0.25 | 0.50 | 7.017 | 25.3 | 147272 | 200307 |
| 7 TO 14 | 45.75 | 45.75 | 2 | 0.25 | 0.50 | 7.551 | 32.3 | 147273 | 200308 |
| 7 TO 13 | 47.75 | 47.75 | 2 | 0.25 | 0.50 | 7.819 | 36.3 | 147274 | 200309 |
| 7 TO 13 | 51.75 | 51.75 | 2 | 0.25 | 0.50 | 8.353 | 45.1 | 147275 | 200310 |
| 7 TO 13 | 53.75 | 53.75 | 2 | 0.25 | 0.50 | 8.621 | 50 | 147276 | 200311 |
| 7 TO 13 | 56 | 56 | 2 | 0.25 | 0.50 | 8.921 | 55.9 | 147277 | 200312 |
| 7 TO 13 | 60 | 60 | 2 | 0.25 | 0.50 | 9.456 | 67.5 | 147278 | 200313 |
| 7 TO 13 | 61 | 61 | 2 | 0.25 | 0.50 | 9.590 | 70.7 | 147279 | 200314 |
| 7 TO 13 | 66 | 66 | 2 | 0.25 | 0.50 | 10.259 | 87.8 | 147280 | 200315 |
| 7 TO 13 | 72 | 72 | 2 | 0.25 | 0.50 | 11.062 | 111.8 | 147281 | 200316 |
| 7 TO 13 | 76.25 | 76.25 | 2 | 0.25 | 0.50 | 11.631 | 131.1 | 147282 | 200317 |
| 7 TO 13 | 78.25 | 78.25 | 2 | 0.25 | 0.50 | 11.898 | 141 | 147283 | 200318 |
| 7 TO 13 | 84 | 84 | 2 | 0.25 | 0.50 | 12.668 | 171.9 | 147284 | 200319 |
| 7 TO 13 | 88.25 | 88.25 | 2 | 0.25 | 0.50 | 13.237 | 197.4 | 147285 | 200320 |
| 7 TO 13 | 90.25 | 90.25 | 2 | 0.25 | 0.50 | 13.505 | 210.3 | 147286 | 200321 |
| 7 TO 13 | 95.75 | 95.75 | 2 | 0.25 | 0.50 | 14.241 | 248.5 | 147287 | 200322 |
| 7 TO 13 | 100.25 | 100.25 | 2 | 0.25 | 0.50 | 14.843 | 282.9 | 147288 | 200323 |
| 7 TO 13 | 102.25 | 102.25 | 2 | 0.25 | 0.50 | 15.111 | 299.2 | 147289 | 200324 |
| 7 TO 13 | 120 | 120 | 3.5 | 0.25 | 0.50 | 18.368 | 514 | 147290 | 200325 |
| 7 TO 13 | 144 | 144 | 3.5 | 0.25 | 0.50 | 21.580 | 856.3 | 147291 | 200326 |

| FINISH DESIGNATION SYMBOL | RA VALUE (MICRO-INCH) MEASURED |
|---------------------------|--------------------------------|
| MILL/AI | N/A |
| CC | N/A |
| BB | N/A |
| BBB | N/A |
| HRAP | N/A |
| 2B | N/A |
| 155 | 155 |
| 125 | 125 |
| 95 | 95 |
| 70 | 70 |
| 50 | 50 |
| 40 | 40 |
| 32 | 32 |
| 25 | 25 |
| 20 | 20 |
| 15 | 15 |
| 12 | 12 |
| 20E | 20 |
| 15E | 15 |
| 12E | 12 |
| 10E | 10 |

NOTE:

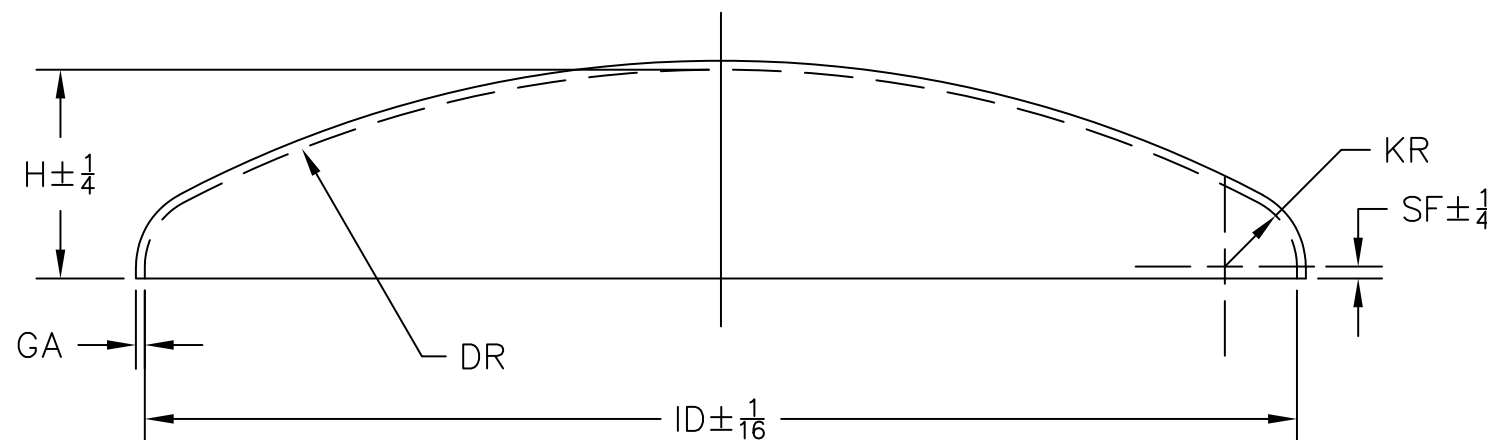
1. MATERIAL TYPES:

STAINLESS STEEL – SA240,304: 14 TO 7 GA
SA240,316/316L: 14 TO 7 GA

MILD STEEL, HOT OR COLD ROLLED: 14 TO 7 GA

2. HEADS ORDERED WITH AN INSIDE/OUTSIDE 2B FINISH WILL HAVE THE PREMIER 2B ON THE INSIDE UNLESS SPECIFIED OTHERWISE.

3. RADIOGRAPHY – FULL, SPOT, NONE



This drawing is the property of DCI, Inc. and is transmitted in confidence. The reproduction, use, or disclosure, in whole or part, of the design contained herein is prohibited without the written consent of DCI, Inc.

| | | | | | | | |
|--------------------|----------|---------------------------------------|---------------|----------|---------|--------|---|
| ORDER NO. | | HYDRO-FORMED HEADS, STANDARD SIZES | | | | | |
| NO. REQD | | | | | | | |
| REV | DATE | DO NOT SCALE DRAWING | | PROD | APPVL | CHK | |
| A | 10/29/03 | DIMENSIONS IN INCHES UNLESS SPECIFIED | | ECV | | | |
| B | | TOLERANCES UNLESS SPECIFIED | | DATE | DATE | DATE | |
| C | | PER DCI STANDARDS DWG. D020000 | | 06/25/02 | | | |
| D | | | | PREFIX | DWG NO. | REV | |
| REF DWG NO. 010297 | | SCALE: NONE | ST. CLOUD, MN | | 051-01 | 200143 | A |

