

MATERIAL GAUGE (GA)	INSIDE DIAMETER (ID)	DISH RADIUS (DR)	KNUCKLE RADIUS (KR)	STRAIGHT FLANGE (SF)		INSIDE HEIGHT (H) W/.25 SF	CAPACITY GALLONS W/.25 SF	STAINLESS DRAWING NO. (REFERENCE)	MILD STEEL DRAWING NO. (REFERENCE)
				STD.	MAX.				
10 TO 14	12	12	1	0.25	0.50	2.452	0.8	147262	200300
7 TO 14	16	16	1.5	0.25	0.50	3.289	1.9	147263	200301
7 TO 14	18	18	1.5	0.25	0.50	3.553	2.6	147264	200302
7 TO 14	18.62	18.62	1.25	0.25	0.50	3.484	2.6	147265	(AVAILABLE)
7 TO 14	19.75	19.75	1.25	0.25	0.50	3.634	3.1	147266	(AVAILABLE)
7 TO 14	20	20	1.5	0.25	0.50	3.818	3.4	147267	200303
7 TO 14	23.75	23.75	1.5	0.25	0.50	4.317	5.3	147268	(AVAILABLE)
7 TO 14	24	24	1.5	0.25	0.50	4.350	5.4	147269	200304
7 TO 14	29.75	29.75	1.87	0.25	0.50	5.342	10.1	147270	200305
7 TO 14	35.75	35.75	2	0.25	0.50	6.217	16.7	147271	200306
7 TO 14	41.75	41.75	2	0.25	0.50	7.017	25.3	147272	200307
7 TO 14	45.75	45.75	2	0.25	0.50	7.551	32.3	147273	200308
7 TO 13	47.75	47.75	2	0.25	0.50	7.819	36.3	147274	200309
7 TO 13	51.75	51.75	2	0.25	0.50	8.353	45.1	147275	200310
7 TO 13	53.75	53.75	2	0.25	0.50	8.621	50	147276	200311
7 TO 13	56	56	2	0.25	0.50	8.921	55.9	147277	200312
7 TO 13	60	60	2	0.25	0.50	9.456	67.5	147278	200313
7 TO 13	61	61	2	0.25	0.50	9.590	70.7	147279	200314
7 TO 13	66	66	2	0.25	0.50	10.259	87.8	147280	200315
7 TO 13	72	72	2	0.25	0.50	11.062	111.8	147281	200316
7 TO 13	76.25	76.25	2	0.25	0.50	11.631	131.1	147282	200317
7 TO 13	78.25	78.25	2	0.25	0.50	11.898	141	147283	200318
7 TO 13	84	84	2	0.25	0.50	12.668	171.9	147284	200319
7 TO 13	88.25	88.25	2	0.25	0.50	13.237	197.4	147285	200320
7 TO 13	90.25	90.25	2	0.25	0.50	13.505	210.3	147286	200321
7 TO 13	95.75	95.75	2	0.25	0.50	14.241	248.5	147287	200322
7 TO 13	100.25	100.25	2	0.25	0.50	14.843	282.9	147288	200323
7 TO 13	102.25	102.25	2	0.25	0.50	15.111	299.2	147289	200324
7 TO 13	120	120	3.5	0.25	0.50	18.368	514	147290	200325
7 TO 13	144	144	3.5	0.25	0.50	21.580	856.3	147291	200326

FINISH DESIGNATION SYMBOL	RA VALUE (MICRO-INCH) MEASURED
MILL/AI	N/A
CC	N/A
BB	N/A
BBB	N/A
HRAP	N/A
2B	N/A
155	155
125	125
95	95
70	70
50	50
40	40
32	32
25	25
20	20
15	15
12	12
20E	20
15E	15
12E	12
10E	10

NOTE:

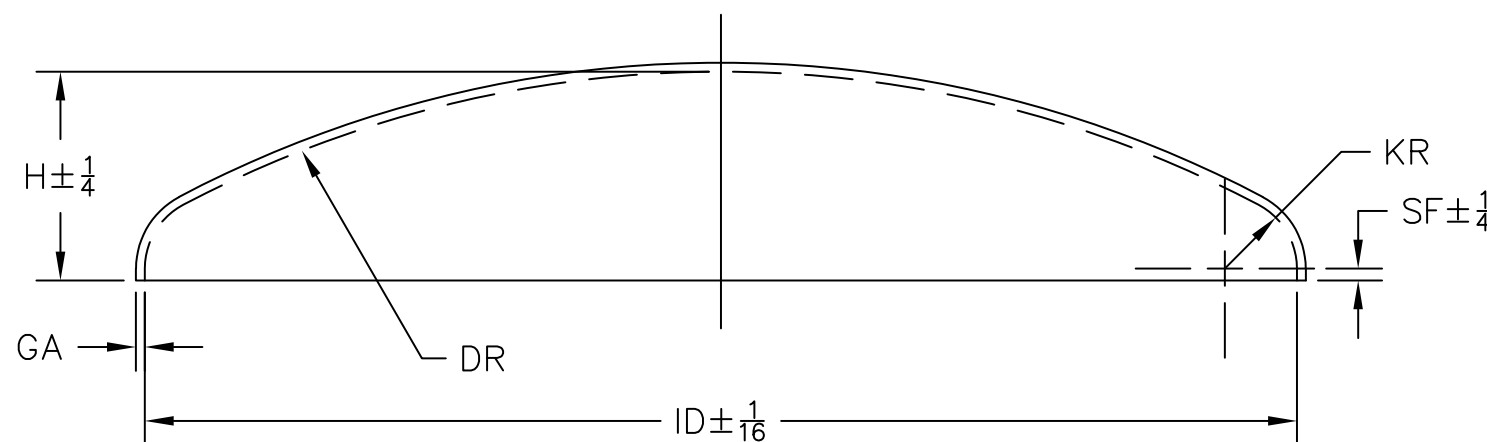
1. MATERIAL TYPES:

STAINLESS STEEL – SA240,304: 14 TO 7 GA
SA240,316/316L: 14 TO 7 GA

MILD STEEL, HOT OR COLD ROLLED: 14 TO 7 GA

2. HEADS ORDERED WITH AN INSIDE/OUTSIDE 2B FINISH WILL HAVE THE PREMIER 2B ON THE INSIDE UNLESS SPECIFIED OTHERWISE.

3. RADIOGRAPHY – FULL, SPOT, NONE



This drawing is the property of DCI, Inc. and is transmitted in confidence. The reproduction, use, or disclosure, in whole or part, of the design contained herein is prohibited without the written consent of DCI, Inc.

ORDER NO.		HYDRO-FORMED HEADS, STANDARD SIZES					
NO. REQD							
REV	DATE	DO NOT SCALE DRAWING		PROD	APPVL	CHK	
A	10/29/03	DIMENSIONS IN INCHES UNLESS SPECIFIED		ECV			
B		TOLERANCES UNLESS SPECIFIED		DATE	DATE	DATE	
C		PER DCI STANDARDS DWG. D020000		06/25/02			
D				PREFIX	DWG NO.	REV	
REF DWG NO. 010297		SCALE: NONE	ST. CLOUD, MN		051-01	200143	A

